

#### TECHNICAL CHARACTERISTICS OF THE CERAMIC DISCS:

Material:	AL <sub>2</sub> O <sub>3</sub>
Surface roughness Ra:	0,3 μm
Contact surface area:	50-70%

#### TECHNICAL CHARACTERISTICS OF THE CARTRIDGE:

Max. opening angle:	25°
Max. mixing angle:	110°
Max. water pressure:	35 bar / 500 psi
Max. temperature:	90°C / 194 °F
Max. tightening torque:	12 Nm / 106 lbf•in
Pressure test: air	6 bar / 87 psi
water	35 bar / 500 psi

#### Flow rate:

(3 bar / 45 psi, test faucet, EN 817)

12,8 l/min / 2,8 gpm with resistance “A”

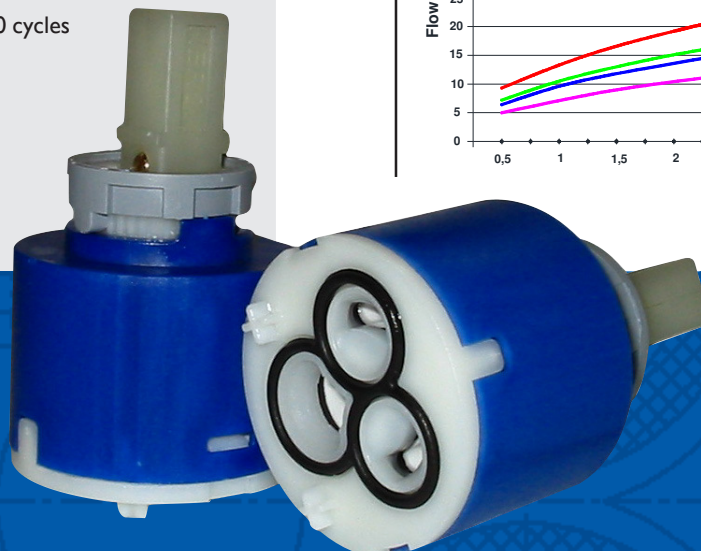
16,7 l/min / 3,7 gpm with resistance “B”

18,5 l/min / 4,1 gpm with resistance “C”

23,5 l/min / 5,2 gpm without resistance

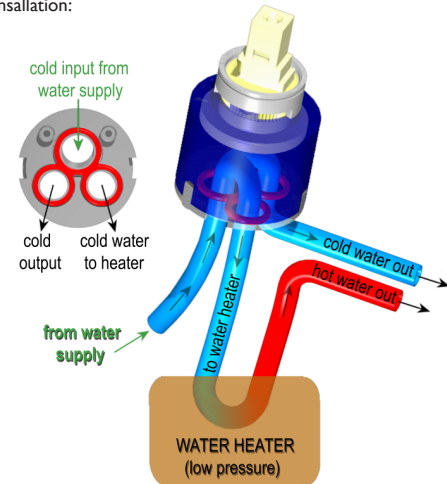
#### Endurance test:

EN 817	70 000 cycles
ASME A112.18.1	500 000 cycles



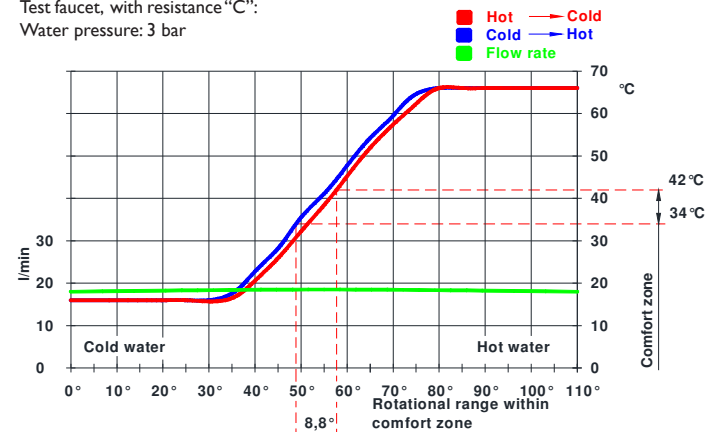
#### “NON-PRESSURIZED” FUNCTION

This cartridge can be used in “non-pressurized” application. Example for installation:

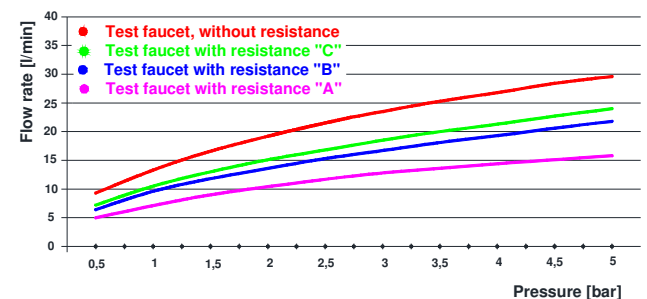


#### FLOW RATE & HISTERESYS CURVES:

Test faucet, with resistance “C”:  
Water pressure: 3 bar



#### FLOW RATE CURVES:

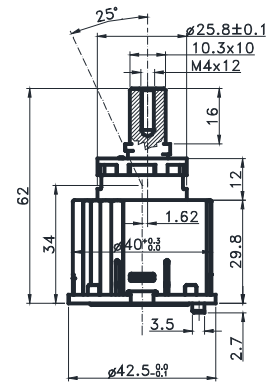
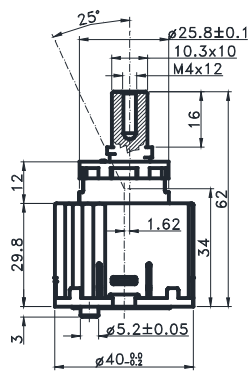
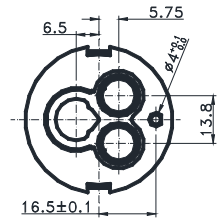
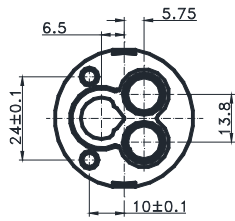


# K-40ND

## CARTRIDGES

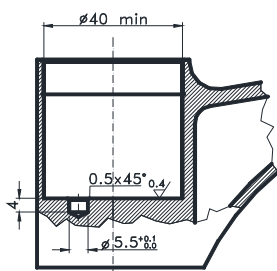
A • C

K-40ND  
Cartridges

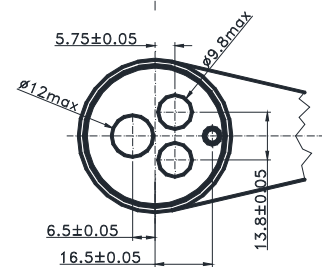
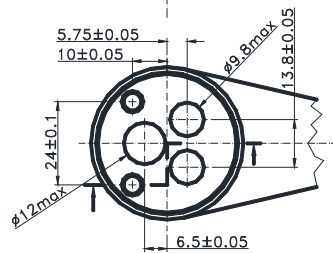
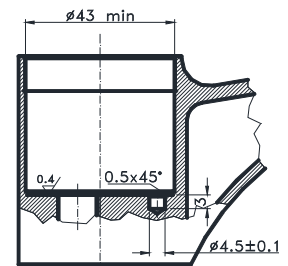


INTERCHANGEABLE WITH 40 MM CONVENTIONAL SINGLE-LEVER CARTRIDGES.

Bodies



The cold water from the cartridge and the hot water from the water heater have to be mixed inside the faucet. It has to be prepared outside the cartridge by the faucet manufacturers.



K-40ND A

K-40ND C