

TECHNICAL CHARACTERISTICS OF THE CERAMIC DISCS:

Material:	AL₂O₃
Surface roughness Ra:	0.3 μm
Contact surface area:	50-70%

TECHNICAL CHARACTERISTICS OF THE CARTRIDGE:

Opening angle:	25°
Mixing angle:	90°
Max water pressure:	35 bar / 500 psi
Max temperature:	90°C / 194°F
Recommended tightening torque:	12-13 Nm / 106-115 lbf·in

Pressure test:

Pneumatic:	6 bar / 87 psi
Hydraulic:	35 bar / 500 psi

Flow rate:

(3 bar / 45 psi, test faucet, EN 817)

22.3 l/min / 5.9 gpm with resistance „C”

34.6 l/min / 9.1 gpm without resistance

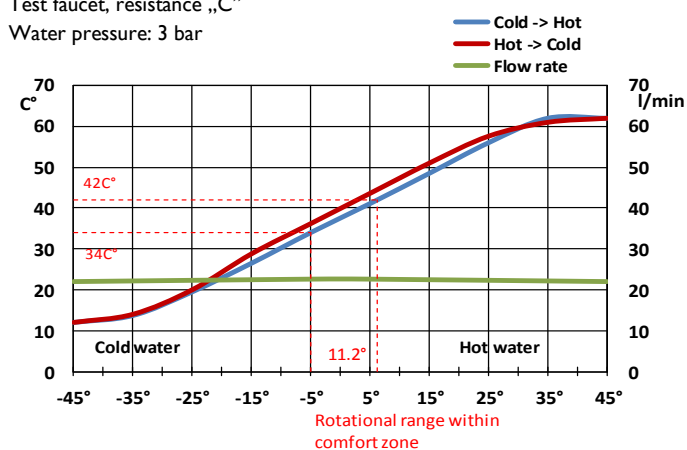
Endurance test:

EN 817	70 000 cycles
ASME A 112.18.1M	500 000 cycles

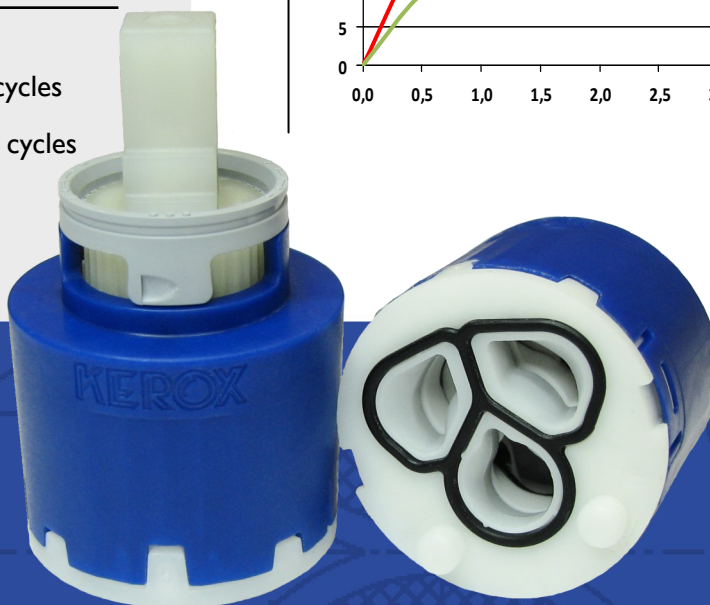
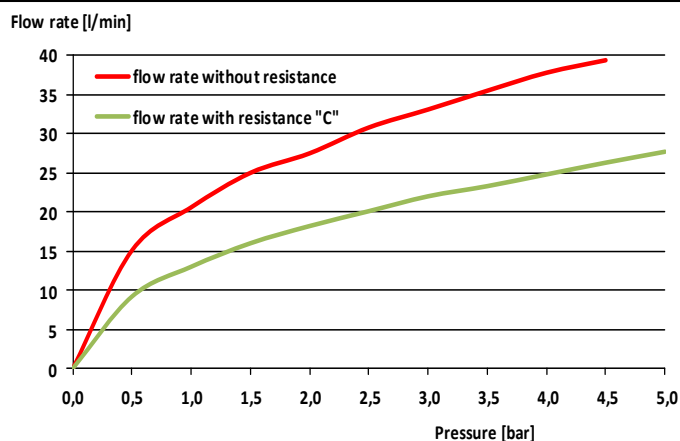
- This cartridge model is also available with energy saving feature: KN-35 ECO
Economical flow rate: max 9 l/min / 2,4 gpm at 3 bar / 45 psi.
- High flow rate.

FLOW RATE & HYSTERESIS CURVES

Test faucet, resistance „C”
Water pressure: 3 bar



FLOW RATE CURVES

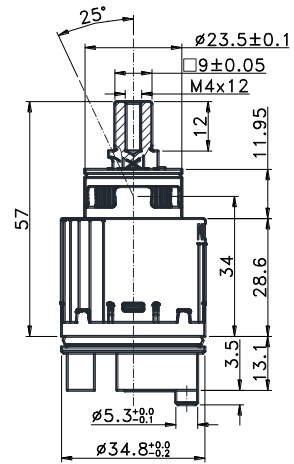
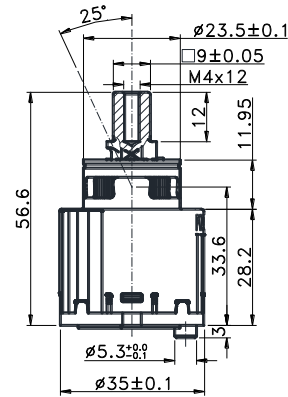
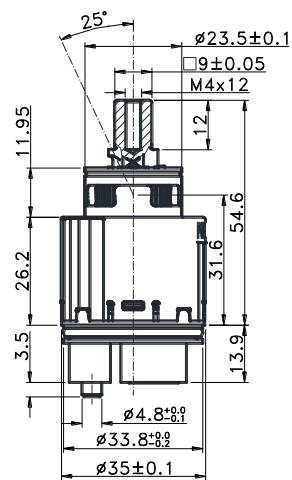
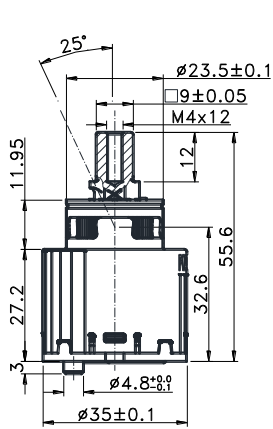
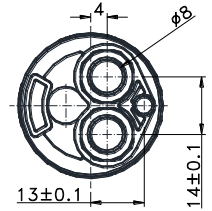
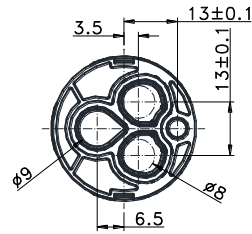
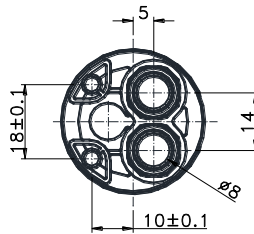
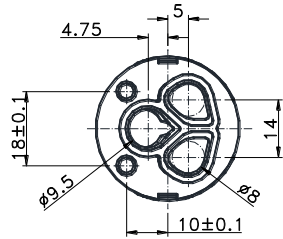


KN-35

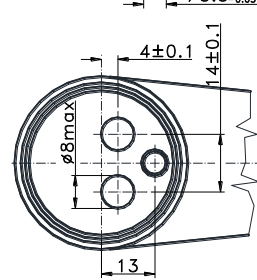
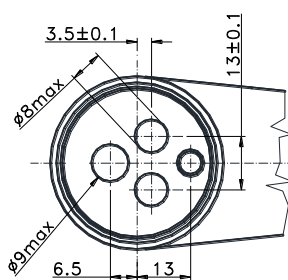
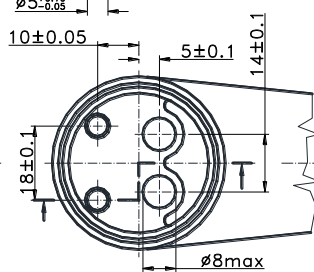
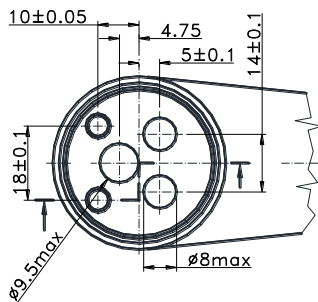
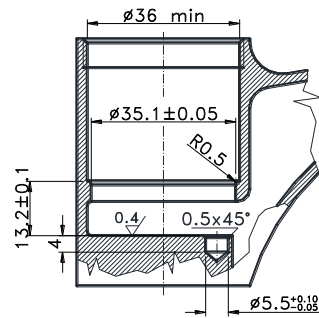
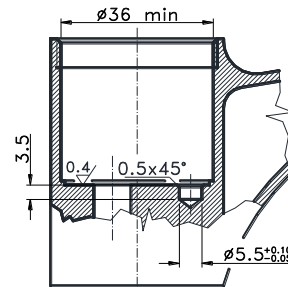
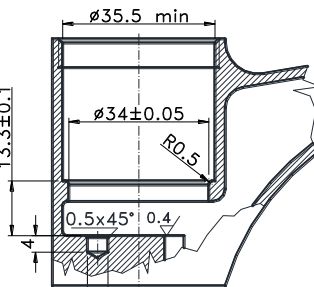
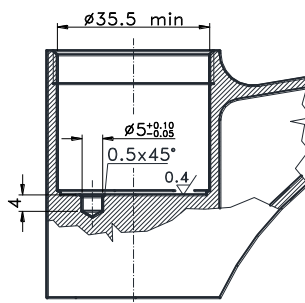
CARTRIDGES

A • B • C • D

Cartridges



Bodies



KN-35 A

KN-35 B

KN-35 C

KN-35 D